

Critical Access Hospital
Administrators Quarterly Meeting
September 8, 2009

John Ferguson, RN/Academic Detailer
Arkansas Foundation for Medical Care

Focus on Patient Safety & Quality

- 9th SOW
 - SCIP/HF
 - MRSA
 - Pressure Ulcer Collaborative
 - Drug Safety
 - TeamSTEPPS

Patient Safety CAH Support

- Assistance with assessing your safety culture
- Implementing strategies to improve processes to reduce/minimize medical errors
- Staff education onsite
- Collaboration

CAH Activities June through August

78 Contact from June through August

- 25 Onsite visits
- 53 Phone calls for support/supplies

Arkansas Patient Safety Website

www.arpatientsafety.com

The screenshot shows the website interface within a Windows Internet Explorer browser window. The browser's address bar displays the URL <http://www.arpatientsafety.com/>. The website header features the title "Arkansas Critical Access Hospital Patient Safety Program" and logos for the Arkansas Foundation for Medical Care and the Arkansas Department of Health, Office of Rural Health and Primary Care.

About Us

- Overview
- Data
- Survey results
- Resources
 - Safety Alerts & Tips
 - Calendar
 - Q&A
 - Safety Program Support
 - Success Stories
 - Training
 - CAH Quarterly Administrators' Meetings
 - General Links
 - General Articles
 - Glossary
- Home

Welcome!

The Arkansas Department of Health, Office of Rural Health and Primary Care and Arkansas Foundation for Medical Care are committed to supporting Critical Access Hospitals in Arkansas. This website has been developed to provide information regarding patient safety with a focus on literature review, tools, and strategies specifically beneficial to the Critical Access Hospital.

What's New

- [Patient Safety & Quality Healthcare e-Newsletter for February 2009](#) 2-19-09
- [AHRQ names Arkansas' first Patient Safety Organization Quality Excellence Inc. to offer new service to hospitals](#) 2-11-09
- [December 2008 CEO CAH Quarterly Meeting Presentations](#)
- [Press Release: Medicaid recognizes critical access hospitals](#)
- [Nine hospitals meet Inpatient Quality Incentive requirements](#)

AHRQ PSNET, a national Web-based resource featuring the latest news and essential resources on patient safety, introduces Patient Safety Primers designed to guide users through key concepts in patient safety. Go to: <http://www.psnet.ahrq.gov/>

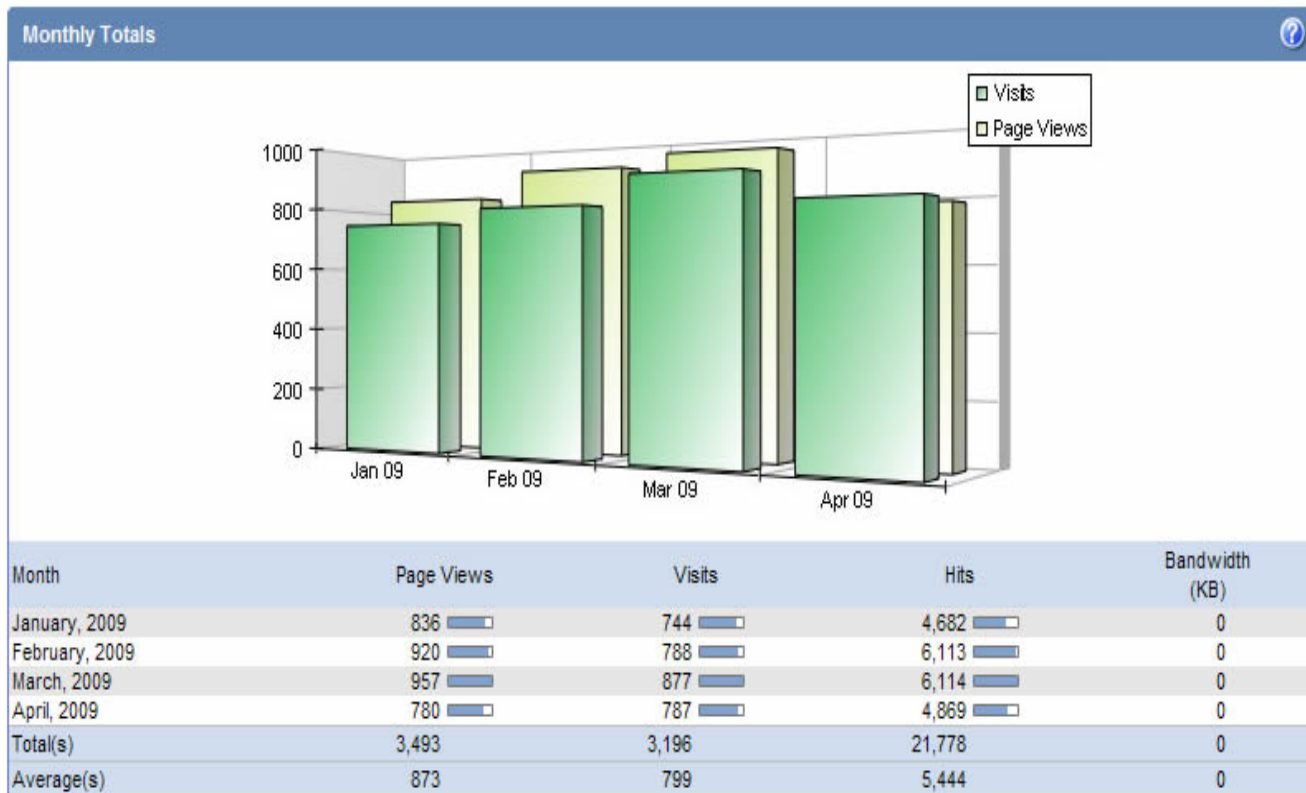
In the News

The page also includes a map of Arkansas titled "2008 ARKANSAS CRITICAL ACCESS HOSPITALS" and a graphic for the "Arkansas 5M Lives Campaign hospital participation".

The Windows taskbar at the bottom shows the Start button, several open applications including "Inbox - Microsoft...", "UNTITLED [Rea...", "CAH CEO June 09", and "UDISK (E:)", and the system tray with the time 8:59 AM.

Arkansas Patient Safety Website

www.arpatientsafety.com



Date Range

1/1/2009 to 4/30/2009

[Custom Date Range](#)

Options

Rows: 10

Sort: Month

Chart: Bar (3D)

Value 1: Visits

Value 2: Page Views

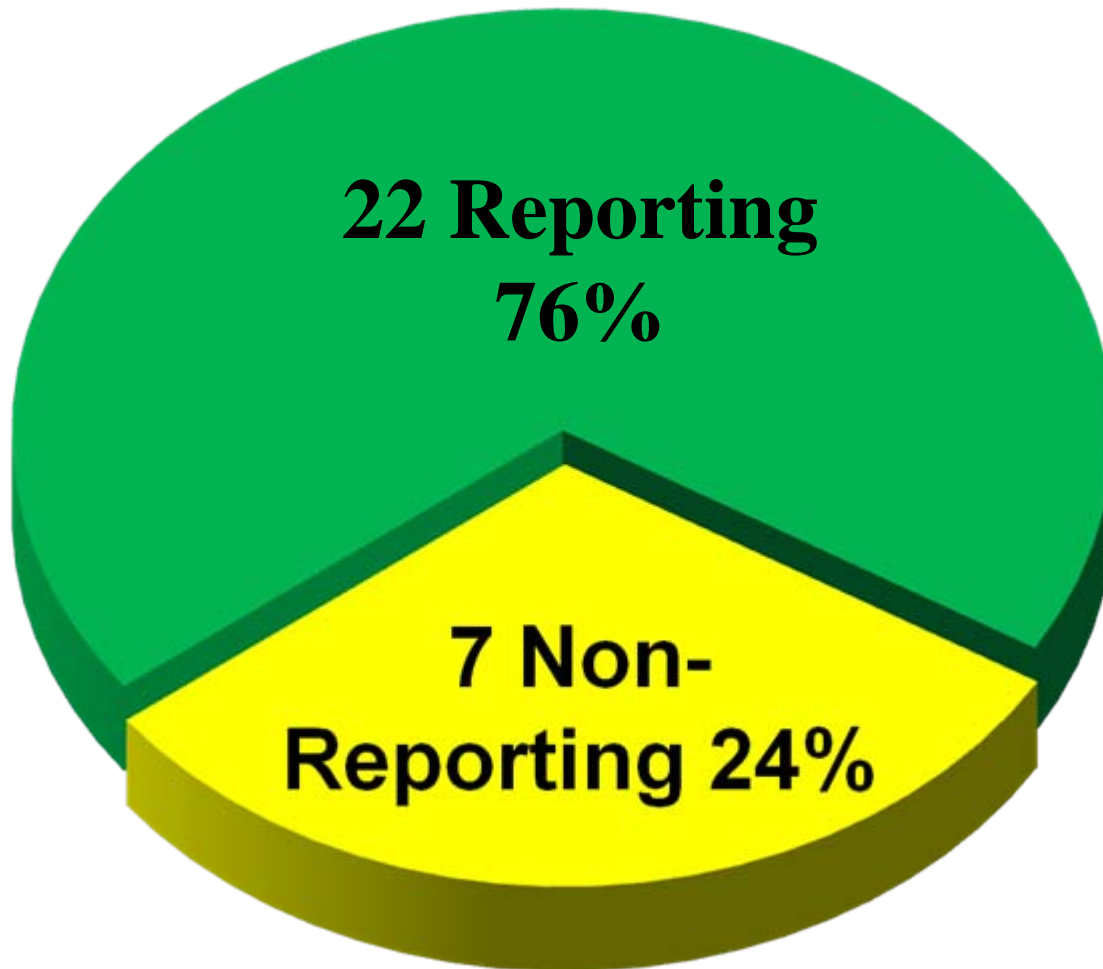
Filter Set: None

[Get Report](#)

- Tasks
- [Add to Favorites](#)
 - [Send to Printer](#)
 - [Export Report Data](#)

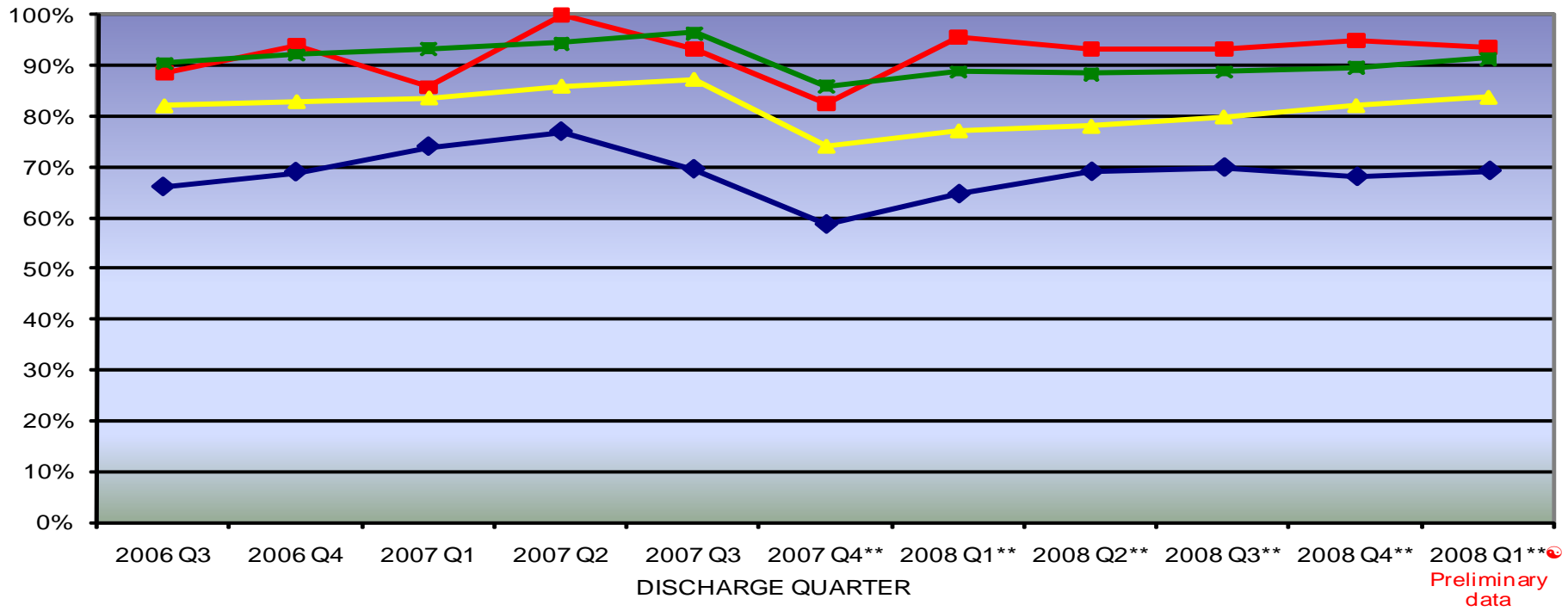
[Top of Page](#)

Arkansas Critical Access Hospitals CAHs Public Reporting



Hospital Compare website data discharge dates October 2007 through September 2008

Critical Access Hospitals



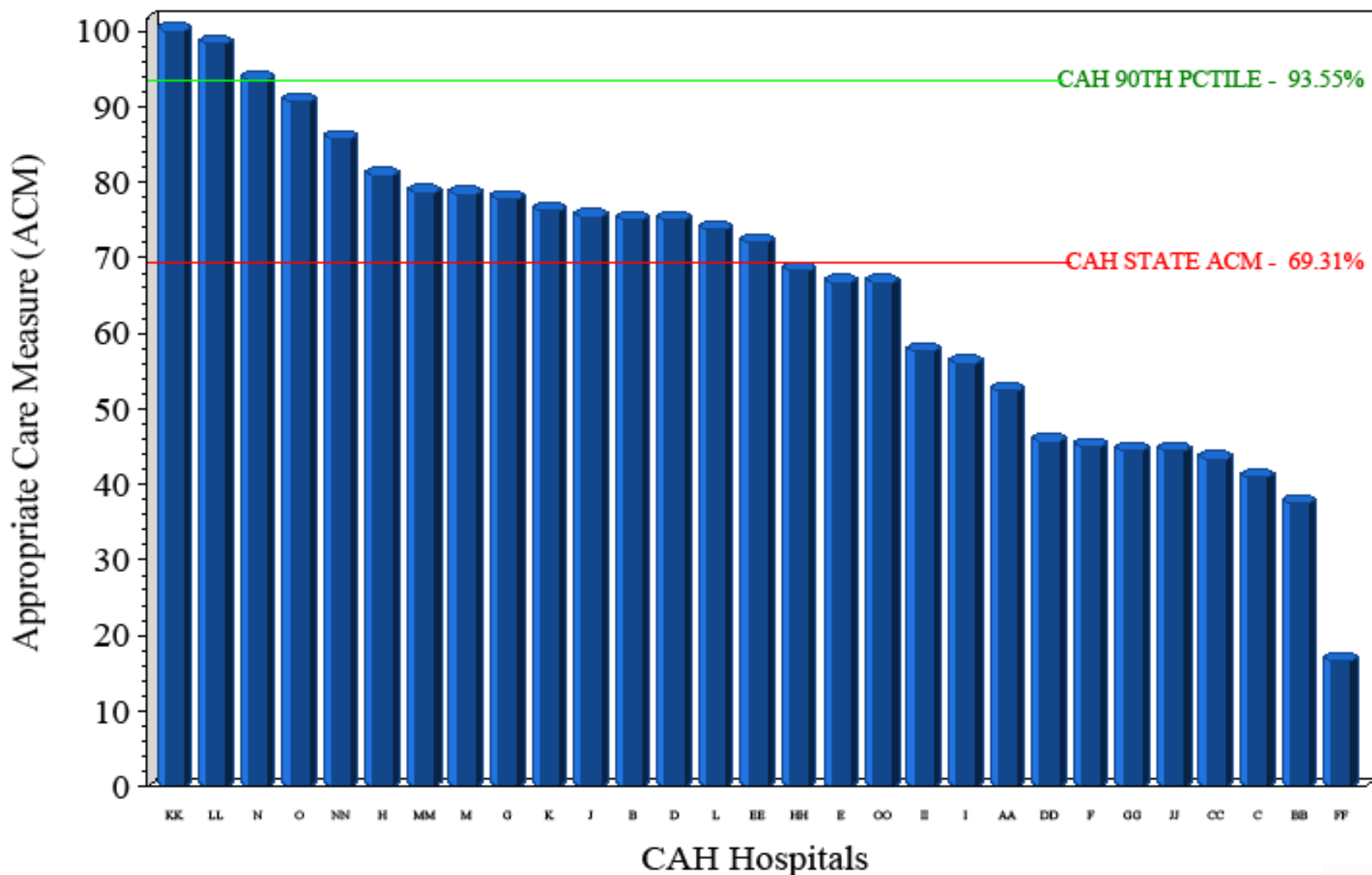
DISCHARGE QUARTER*	CAH ACM RATE	CAH ACM 90TH PERCENTILE	PPS ACM RATE	PPS ACM 90TH PERCENTILE
2006 Q3	66.18%	88.52%	82.11%	90.57%
2006 Q4	69.07%	93.94%	82.93%	92.23%
2007 Q1	74.04%	85.71%	83.66%	93.33%
2007 Q2	76.96%	100.00%	85.96%	94.44%
2007 Q3	69.64%	93.33%	87.28%	96.48%
2007 Q4**	58.86%	82.50%	74.21%	85.94%
2008 Q1**	64.79%	95.56%	77.21%	88.89%
2008 Q2**	69.14%	93.33%	78.09%	88.45%
2008 Q3**	69.96%	93.33%	79.93%	88.89%
2008 Q4**	68.16%	95.00%	82.14%	89.61%
2008 Q1** (Preliminary data)	69.31%	93.55%	83.77%	91.46%

* DATA SUBMITTED TO THE CLINICAL WAREHOUSE BY HOSPITALS/VENDORS

** Surgical Hospital and LTC Facility data was not included (29 Measures ACM)

(Preliminary data icon) Q1 2009 data reflects retirement of measure PN-1.

Appropriate Care Measure (28 Measure ACM) Ranking QTR 1, 2009 Discharges - Preliminary Data



08/17/2009

Produced by The Arkansas Foundation for Medical Care (www.AFMC.org)

Note: Surgical Hospital and LTC Facility data was not included

Retired PN-1 data not included in ACM Rate.

CAHs Achieving 100% Appropriate Care Measure Scores

2nd Quarter 2008 = 0

3rd Quarter 2008 = 1

4th Quarter 2008 = 1

1st Quarter 2009 = 1

SCIP/HF

Effective 10/01/09

Two new measures

SCIP Inf-9

SCIP Inf-10

One measure retired

SCIP Inf-7

SCIP Inf-9

- Urinary Catheter removed on POD 1 or POD 2

SCIP Inf-10

- Surgery patients with perioperative Temperature Management

AMI-7, AMI-7a, AMI-8, and AMI-8a

- Removed *Comfort Measures Only* as and exclusion. Patients with documented comfort measures only will now remain included in the measure.

Hospital Pressure Ulcer Project

- Internal Factors
- External Factors

Examples of the Core Information Needed for Transfer

- Medication list/Allergies/Intolerances
- Resuscitation status/advance directive
- Vaccination Status
- Skin integrity
- Sensory deficits
- Dietary needs/nutritional status
- Continence
- Fall Risk

TeamSTEPPS

Three CAH were represented

- Crossridge Community Hospital
- Lawrence Memorial Hospital
- St. Anthony's Medical Center

Safe Calls are resuming

QUESTIONS